

AChE antibody



Catalog No: #AT10353

Host Species: Rabbit

Clonality: Polyclonal antibody

Species Reactivity: Human; Mouse; Rat

SDS-PAGE MW: 70 kDa

Applications: Western blotting
Immunohistochemistry
ELISA

Package Size:
#AT10353S 20 μ l
#AT10353M 50 μ l

Description

Product Name AChE antibody

Purification Antibodies were produced by immunizing rabbits with synthetic peptide, and purified by affinity isolation.

Specificity AChE polyclonal antibody detects endogenous levels of AChE protein.

Immunogen Type
Peptide

Immunogen Description
Synthesized peptide derived from the Internal region of human AChE.

Target Name AChE

Other Names ACHE; Acetylcholinesterase; AChE

Concentration 1.0 mg/ml

Storage Store at -20°C for long term preservation (recommended). Store at 4°C for short term use.

Note In order to get the best results using various techniques and preparations, we recommend detecting optimal working dilutions by titration.

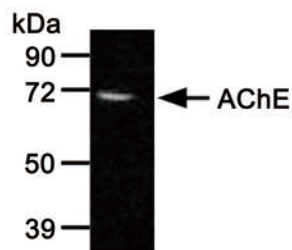
Application Details

Western blotting: 1:500~1:2000

Immunohistochemistry (IHC): 1:50~1:300

ELISA: 1:10000~30000

Images



Western blot analysis of lysates from MCF7 cells, using AChE rabbit polyclonal antibody #AT10353.



Tel: 025-85390309; 85300038

Orders: sales@sciben.com

Support: support@sciben.com

Website: www.sciben.com