

Phospho-c-Jun (Ser63) antibody



Catalog No: #AT1054

Host Species: Mouse

Clonality: Monoclonal antibody (mAb)

Species Reactivity: Human; Mouse; Rat

SDS-PAGE MW: 39 kDa

Applications:

Western blotting
Immunohistochemistry
Immunoprecipitation
Immunofluorescence

Package Size:

#AT1054S 20 μ l
#AT1054M 50 μ l

Description

Product Name Phospho-c-Jun (Ser63) antibody

Purification Monoclonal antibody is purified by affinity isolation.

Specificity The antibody detects c-Jun phosphorylated on serine 63 protein.

Immunogen Type
Recombinant protein

Immunogen Description
Recombinant protein

Target Name Phospho-c-Jun (Ser63)

Other Names Activator protein 1 antibody; Jun proto oncogene antibody; JUN_HUMAN antibody; JUNC antibody; Oncogene JUN antibody; p39 antibody; Proto oncogene c jun antibody

Concentration 0.5 mg/ml

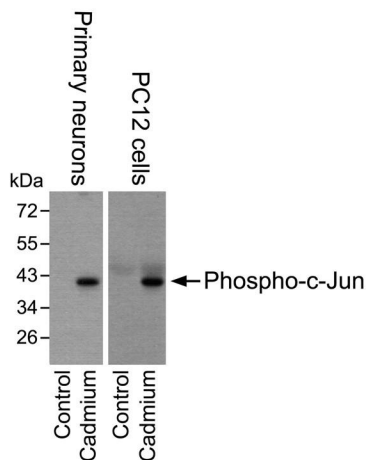
Storage Store at -20°C for long term preservation (recommended). Store at 4°C for short term use.

Note In order to get the best results using various techniques and preparations, we recommend detecting optimal working dilutions by titration.

Application Details

Western blotting: 1:200~1:1000
Immunohistochemistry (IHC): 1:25~1:200
Immunofluorescence (IF): 1:25~1:200
Immunoprecipitation (IP): 1:25~1:200

Images



Western blot analysis of lysates from mouse primary neurons and PC12 cells treated with or without $10\ \mu\text{M}$ cadmium, using phospho-c-Jun (Ser63) mouse monoclonal antibody #AT1054.



Tel: 025-85390309; 85300038

Orders: sales@sciben.com

Support: support@sciben.com

Website: www.sciben.com