

# Bcl-xL antibody



Catalog No: #AT11559

**Host Species:** Rabbit

**Clonality:** Polyclonal antibody

**Species Reactivity:** Human; Mouse; Rat

**SDS-PAGE MW:**  
30 kDa

**Applications:**  
Western blotting

**Package Size:**  
#AT11559S 20  $\mu$ l  
#AT11559M 50  $\mu$ l

## Description

**Product Name** Bcl-xL antibody

**Purification** The antibody was affinity-purified from rabbit antiserum by affinity-chromatography using epitope-specific immunogen.

**Specificity** Bcl-xL polyclonal antibody detects endogenous levels of total Bcl-xL protein.

**Immunogen Type**  
Recombinant protein

**Immunogen Description**  
Recombinant protein

**Target Name** Bcl-xL

**Other Names** Apoptosis regulator Bcl-X; Bcl 2 like 1 protein; BCL2L; BclXL; BclXs

**Concentration** 1.0 mg/ml

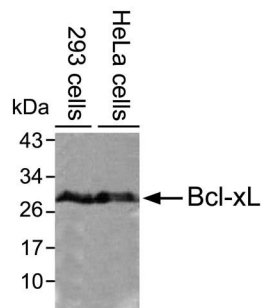
**Storage** Store at -20°C for long term preservation (recommended). Store at 4°C for short term use.

**Note** In order to get the best results using various techniques and preparations, we recommend detecting optimal working dilutions by titration.

## Application Details

Western blotting: 1:500~1:1000

## Images



Western blot analysis of lysates from 293 cells and HeLa cells, using Bcl-xL rabbit polyclonal antibody #AT11559.



Tel: 025-85390309; 85300038

Orders: sales@sciben.com

Support: support@sciben.com

Website: www.sciben.com