

Description

| | |
|-----------------------|--|
| Product Name | c-Fos antibody |
| Host Species | Rabbit |
| Clonality | Polyclonal antibody |
| Purification | Antibody was produced by immunizing rabbits with synthetic peptides, and purified by affinity isolation. |
| Applications | Western blotting (WB); Immunohistochemistry (IHC); ELISA |
| Species Reactivity | Human; Mouse; Rat |
| Specificity | c-Fos rabbit polyclonal Ab detects endogenous levels of total c-Fos protein. |
| Immunogen Type | Peptide |
| Immunogen Description | Synthesized peptide derived from human c-Fos. |
| Target Name | c-Fos |
| Other Names | Proto-oncogene c-Fos; FOS; Cellular oncogene fos; G0S7; G0/G1 switch regulatory protein 7. |
| Concentration | 1.0 mg/ml |
| Storage | Store at -20°C for long term preservation (recommended). Store at 4°C for short term use. |
| Note | In order to get the best results using various techniques and preparations, we recommend detecting optimal working dilutions by titration. |

Application Details

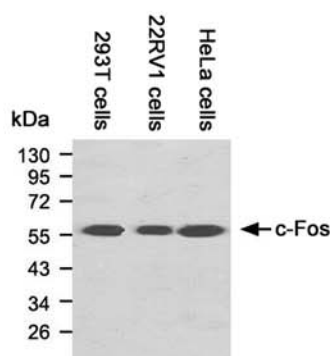
Predicted MW: 58 kDa

Western blotting: 1:500~1:2000

Immunohistochemistry: 1:50~1:200

ELISA: 1:2500~1:5000

Images



Western blot analysis of extracts from 293T cells, 22RV1 cells and HeLa cells, using c-Fos rabbit polyclonal antibody #AT12907.

