

CYP3A4 antibody



Catalog No: #AT13961

Host Species: Rabbit

Clonality: Polyclonal antibody

Species Reactivity: Human

SDS-PAGE MW: 57 kDa

Applications:
Western blotting
Immunohistochemistry
ELISA

Package Size:
#AT13961S 20 μ l
#AT13961M 50 μ l

Description

Product Name CYP3A4 antibody

Purification The antibody was affinity-purified from rabbit antiserum by affinity-chromatography using epitope-specific immunogen.

Specificity CYP3A4 polyclonal antibody detects endogenous levels of total CYP3A4 protein.

Immunogen Type
Peptide

Immunogen Description
Synthesized peptide derived from the Internal region of human CYP3A4.

Target Name CYP3A4

Other Names Cytochrome P450 3A4; Cytochrome P450 3A3; Cytochrome P450 HLP; Cytochrome P450 NF-25; Cytochrome P450-PCN1; CYP3A4; CYP3A3; Albendazole monooxygenase; Albendazole sulfoxidase; CYP11A3; CYP11A4; Nifedipine

Concentration 1.0 mg/ml

Storage Store at -20°C for long term preservation (recommended). Store at 4°C for short term use.

Note In order to get the best results using various techniques and preparations, we recommend detecting optimal working dilutions by titration.

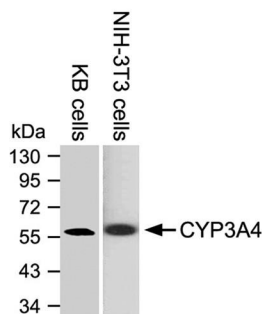
Application Details

Western blotting: 1:500~1:2000 (recommended 1:1000)

Immunohistochemistry (IHC): 1:50~1:200

ELISA: 1:1000-1:5000

Images



Western blot analysis of extracts from KB cells and NIH-3T3 cells, using CYP3A4 rabbit polyclonal antibody #AT13961.



Tel: 025-85390309; 85300038

Orders: sales@sciben.com

Support: support@sciben.com

Website: www.sciben.com