

Description

Product Name	FSHR antibody
Host Species	Rabbit
Clonality	Polyclonal antibody
Purification	The antibody was affinity-purified from rabbit antiserum by affinity-chromatography using epitope-specific immunogen.
Applications	Western blotting; Immunohistochemistry (IHC)
Species Reactivity	Human
Specificity	FSHR antibody detects endogenous levels of total FSHR protein.
Immunogen Type	Recombinant Protein
Immunogen Description	Fusion protein corresponding to a region derived from internal residues of human FSHR.
Target Name	FSHR
Other Names	LGR1; ODG1; Follicle-stimulating hormone receptor; FSH-R; Follitropin receptor
Concentration	1.0 mg/ml
Storage	Store at -20°C for long term preservation (recommended). Store at 4°C for short term use.
Note	In order to get the best results using various techniques and preparations, we recommend detecting optimal working dilutions by titration.

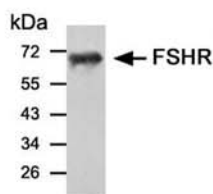
Application Details

SDS-PAGE molecular Wt: 70 kDa

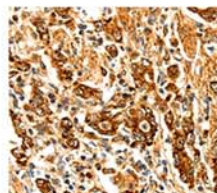
Western blotting: 1:500~1:2000 (recommended 1:1000)

Immunohistochemistry: 1:50-1:200

Images



Western blot analysis of lysates from human ovarian cancer tissue, using FSHR rabbit polyclonal antibody #AT15574.



Immunohistochemical analysis of paraffin-embedded human gastric cancer tissue, using FSHR rabbit polyclonal antibody #AT15574.

