

ICAM-1 antibody



Catalog No: #AT16932

Host Species: Rabbit

Clonality: Polyclonal antibody

Species Reactivity: Human

SDS-PAGE MW: 58 kDa

Applications: Western blotting
ELISA

Package Size:
#AT16932S 20 μ l
#AT16932M 50 μ l

Description

Product Name ICAM-1 antibody

Purification The antibody was affinity-purified from rabbit antiserum by affinity-chromatography using epitope-specific immunogen.

Specificity ICAM-1 polyclonal antibody detects endogenous levels of ICAM-1 protein.

Immunogen Type
Peptide

Immunogen Description
Synthesized peptide derived from human ICAM-1 around the non-phosphorylation site of Y512.

Target Name ICAM-1

Other Names ICAM1; Intercellular adhesion molecule 1; ICAM-1; Major group rhinovirus receptor; CD antigen CD54

Concentration 1.0 mg/ml

Storage Store at -20°C for long term preservation (recommended). Store at 4°C for short term use.

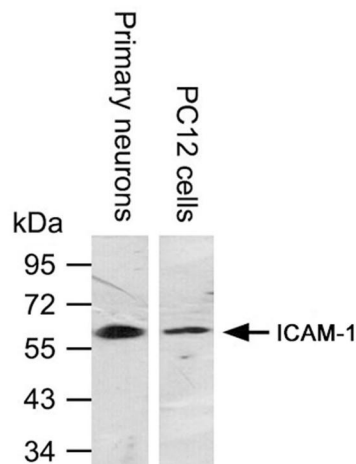
Note In order to get the best results using various techniques and preparations, we recommend detecting optimal working dilutions by titration.

Application Details

Western Blot: 1:500~1:2000

ELISA: 1:5000~1:10000

Images



Western blot analysis of lysates from mouse primary neurons and PC12 cells, using ICAM-1 rabbit polyclonal antibody #AT16932.



Tel: 025-85390309; 85300038

Orders: sales@sciben.com

Support: support@sciben.com

Website: www.sciben.com