

# LCN2 antibody



Catalog No: #AT17911

**Host Species:** Rabbit

**Clonality:** Polyclonal antibody

**Species Reactivity:** Human

**SDS-PAGE MW:** 23 kDa

**Applications:** Western blotting  
Immunohistochemistry

**Package Size:**  
#AT17911S 20  $\mu$ l  
#AT17911M 50  $\mu$ l

## Description

**Product Name** LCN2 antibody

**Purification** The antibody was affinity-purified from rabbit antiserum by affinity-chromatography using epitope-specific immunogen.

**Specificity** The antibody detects endogenous levels of total LCN2 protein.

**Immunogen Type** Peptide

### Immunogen Description

Synthetic peptide corresponding to a region derived from internal residues of human LCN2.

**Target Name** LCN2

**Other Names** Lipocalin 2; NGAL; MSFI; 24p3

**Concentration** 1.0 mg/ml

**Storage** Store at -20°C for long term preservation (recommended). Store at 4°C for short term use.

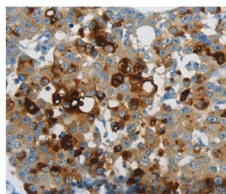
**Note** In order to get the best results using various techniques and preparations, we recommend detecting optimal working dilutions by titration.

## Application Details

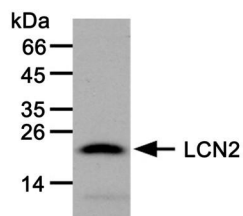
Western blotting: 1:500~1:2000 (recommended 1:1000)

Immunohistochemistry (IHC): 1:50~1:200

## Images



Immunohistochemical analysis of paraffin-embedded human breast cancer tissue using LCN2 rabbit polyclonal antibody #AT17911.



Western blot analysis of extracts from human liver cancer tissues, using LCN2 rabbit polyclonal antibody #AT17911.



Tel: 025-85390309; 85300038

Orders: sales@sciben.com

Support: support@sciben.com

Website: www.sciben.com