

# mCherry-Tag antibody



Catalog No: #AT18389

**Host Species:** Mouse

**Clonality:** Monoclonal antibody (mAb)

**SDS-PAGE MW:**  
N/A

**Applications:**

Western blotting  
Immunohistochemistry  
immunofluorescence  
Immunoprecipitation

**Package Size:**

#AT18389S 20  $\mu$ l

#AT18389M 50  $\mu$ l

## Description

**Product Name** mCherry-Tag antibody

**Purification** Monoclonal antibody is purified by affinity isolation.

**Specificity** mCherry-Tag mouse monoclonal antibody detects endogenous levels of internal, C-terminal, and N-terminal mCherry-tagged recombinant proteins.

**Immunogen Type**  
Recombinant Protein

**Immunogen Description**  
Full length mCherry protein

**Target Name** mCherry-Tag

**Concentration** 0.5 mg/ml

**Storage** Store at -20°C for long term preservation (recommended). Store at 4°C for short term use.

**Note** In order to get the best results using various techniques and preparations, we recommend detecting optimal working dilutions by titration.

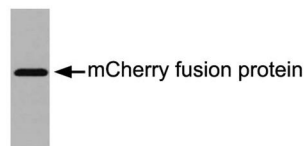
## Application Details

Western blotting: 1:1000~1:3000 (recommended 1:2000)

Immunohistochemistry (IHC): 1:25~1:100

Immunofluorescence (IF): 1:25~1:100

## Images



Western blot analysis of mCherry fusion protein, using mCherry-Tag mouse monoclonal antibody #AT18389.



Tel: 025-85390309; 85300038

Orders: sales@sciben.com

Support: support@sciben.com

Website: www.sciben.com