

Parvalbumin antibody



Catalog No: #AT20268

Host Species: Rabbit

Clonality: Polyclonal antibody

Species Reactivity: Human; Mouse; Rat

SDS-PAGE MW: 12 kDa

Applications: Western blotting

Package Size:
#AT20268S 20 μ l
#AT20268M 50 μ l

Description

Product Name Parvalbumin antibody

Purification The antibody was affinity-purified from rabbit antiserum by affinity-chromatography using epitope-specific immunogen.

Specificity Parvalbumin polyclonal antibody detects endogenous level of total Parvalbumin protein.

Immunogen Type
Peptide

Immunogen Description
A synthesized peptide derived from human Parvalbumin

Target Name Parvalbumin

Other Names PVALB, D22S749, Parvalbumin, Parvalbumin alpha

Concentration 1.0 mg/ml

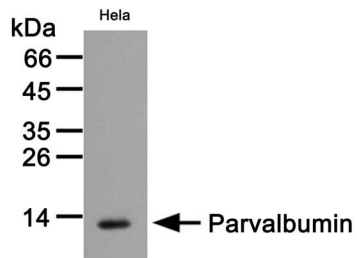
Storage Store at -20°C for long term preservation (recommended). Store at 4°C for short term use.

Note In order to get the best results using various techniques and preparations, we recommend detecting optimal working dilutions by titration.

Application Details

Western blotting: 1:1000~1:2000

Images



Western blot analysis of lysates from HeLa cells, using Parvalbumin rabbit polyclonal antibody #AT20268.



Tel: 025-85390309; 85300038

Orders: sales@sciben.com

Support: support@sciben.com

Website: www.sciben.com