

# TRPA1 antibody



Catalog No: #AT23768

**Host Species:** Rabbit

**Clonality:** Polyclonal antibody

**Species Reactivity:** Human

**Applications:** Immunohistochemistry

**Package Size:**

#AT23768S 20  $\mu$ l

#AT23768M 50  $\mu$ l

## Description

**Product Name** TRPA1 antibody

**Purification** Antibodies were produced by immunizing rabbits with synthetic peptide, and purified by affinity isolation.

**Specificity** The antibody detects endogenous levels of total TRPA1 protein.

**Immunogen Type**  
Peptide

**Immunogen Description**  
Synthetic peptide

**Target Name** TRPA1

**Other Names** ANKTM1; FEPS

**Concentration** 1.0 mg/ml

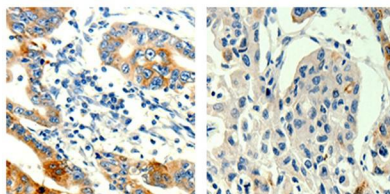
**Storage** Store at -20°C for long term preservation (recommended). Store at 4°C for short term use.

**Note** In order to get the best results using various techniques and preparations, we recommend detecting optimal working dilutions by titration.

## Application Details

Immunohistochemistry (IHC): 1:25~1:100

## Images



Immunohistochemical analysis of paraffin-embedded human gastric cancer tissue (left) and lung cancer tissue (right), using TRPA1 rabbit polyclonal antibody #AT23768.



Tel: 025-85390309; 85300038

Orders: sales@sciben.com

Support: support@sciben.com

Website: www.sciben.com