

# BrdU antibody



Catalog No: #AT24728

**Host Species:** Mouse

**Clonality:** Monoclonal antibody (mAb)

**Species Reactivity:**  
Bromodeoxyuridine

**Applications:**  
Immunofluorescence  
Immunohistochemistry  
Flow cytometry

**Package Size:**  
#AT24728S 20  $\mu$ l  
#AT24728M 50  $\mu$ l

## Description

**Product Name** BrdU antibody

**Purification** Monoclonal antibody is purified by affinity isolation.

**Immunogen Type**  
peptide

**Immunogen Description**  
Peptide

**Target Name** BrdU

**Other Names** Bromodeoxyuridine; BUdr

**Concentration** 1.0 mg/ml

**Storage** Store at -20°C for long term preservation (recommended). Store at 4°C for short term use.

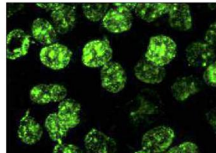
**Note** In order to get the best results using various techniques and preparations, we recommend detecting optimal working dilutions by titration.

## Application Details

Immunohistochemistry (IHC): 1:50~1:300

Flow cytometry (FCM): 1  $\mu$ g per 1 x 10<sup>6</sup> cells

## Images



Using BrdU mouse monoclonal antibody #AT24728.



Tel: 025-85390309; 85300038

Orders: sales@sciben.com

Support: support@sciben.com

Website: www.sciben.com