

THE LACK OF VALIDATED BIOREAGENTS HAS LONG CONTRIBUTED TO DATA INCONSISTENCY AND NON-REPRODUCIBLE BIOMEDICAL RESEARCH.

WE PROVIDE VALIDATED SHRNA LENTIVIRAL PARTICLES AND SHRNA-MEDIATED KNOCKDOWN-VALIDATED ANTIBODIES TO SAVE YOU RESOURCES AND TIME.

OUR REGULAR MONOCLONAL ANTIBODIES ARE MOSTLY RABBIT MONOCLONAL RECOMBINANT ANTIBODIES WITH MINIMAL BATCH-TO-BATCH VARIATIONS.

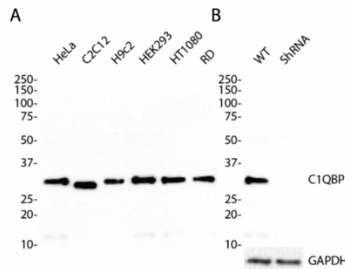
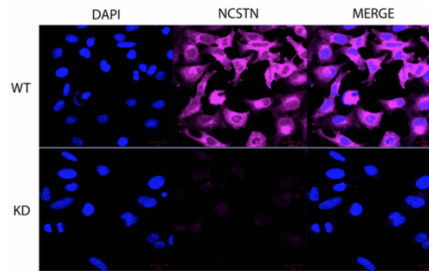
OUR UNIQUELY FORMULATED REAGENTS PROVIDE SUPERIOR PERFORMANCE, COST-EFFECTIVENESS, AND ULTIMATE SOLUTIONS FOR YOUR RESEARCH.

HOW CAN GENUIN HELP YOUR RESEARCH



KD-Validated shRNA Lentiviral Particles

Fig.1. Immunocytochemical staining of wild-type (WT) and *NCSTN* shRNA-knockdown HeLa cells with anti-*NCSTN* rabbit mAb (Cat#5175). Scale bar, 20 μ m.

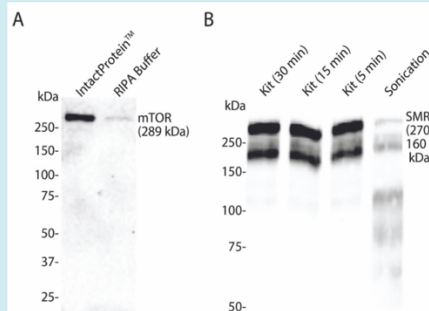


KD-Validated Monoclonal Antibodies

Fig.2. C1QBP expression in various cell lines (A) and in wild-type (WT) and *C1QBP* shRNA knockdown HeLa cells (B). GAPDH serves as a loading control.

Uniquely Formulated Superior Reagents

Fig.3. HeLa cells were lysed with IntactProtein™ Cell-Tissue Lysis Kit (A&B) or RIPA buffer (A) in the absence or presence of sonication (B). Anti-MTOR and anti-SMRT antibodies were used for WB.



Distributor in China
Nanjing Sciben Biotech Co. Ltd
南京善本生物科技有限公司
sales@sciben.com