

Description

Product Name	His-Tag antibody
Host Species	Mouse
Clonality	Monoclonal antibody (mAb)
Purification	Monoclonal antibody is purified by affinity isolation.
Applications	Western blotting; Immunofluorescence (IF); Immunocytochemistry (ICC)
Species Reactivity	N/A
Specificity	His-Tag mouse mab detects endogenous levels of internal, C-terminal, or N-terminal 6His-tagged proteins.
Immunogen Type	Peptide-KLH
Immunogen Description	A synthetic peptide HHHHHH coupled to KLH.
Target Name	His-Tag
Concentration	1.0 mg/ml
Storage	Store at -20°C for long term preservation (recommended). Store at 4°C for short term use.
Note	In order to get the best results using various techniques and preparations, we recommend detecting optimal working dilutions by titration.

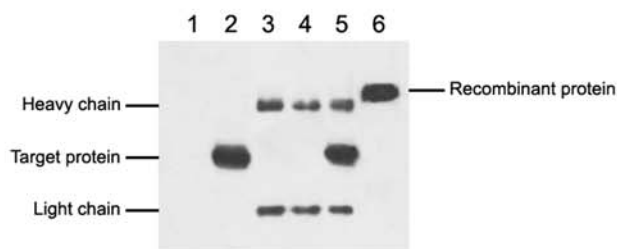
Application Details

SDS-PAGE molecular Wt: N/A

Western blotting: 1:1000~1:3000 (recommended 1:2000)

Immunofluorescence/Immunocytochemistry : 1:50~1:200

Images



IP antibody use: 5 µg His mouse IgG1 per ml lysate,
Western blot analysis using His-tag mouse mAb antibody #AT16495.

- 1、 Untransfected 293 cell lysate
- 2、 Transfected 293 cell lysate with His-tag fusion protein
- 3、 IP (untransfected 293 + anti-His mAb + protein G agarose)
- 4、 IP (transfected 293 + normal mouse IgG + protein G agarose)
- 5、 IP (transfected 293 + anti-His mAb+ protein G agarose)
- 6、 Recombinant protein (E.coli)

